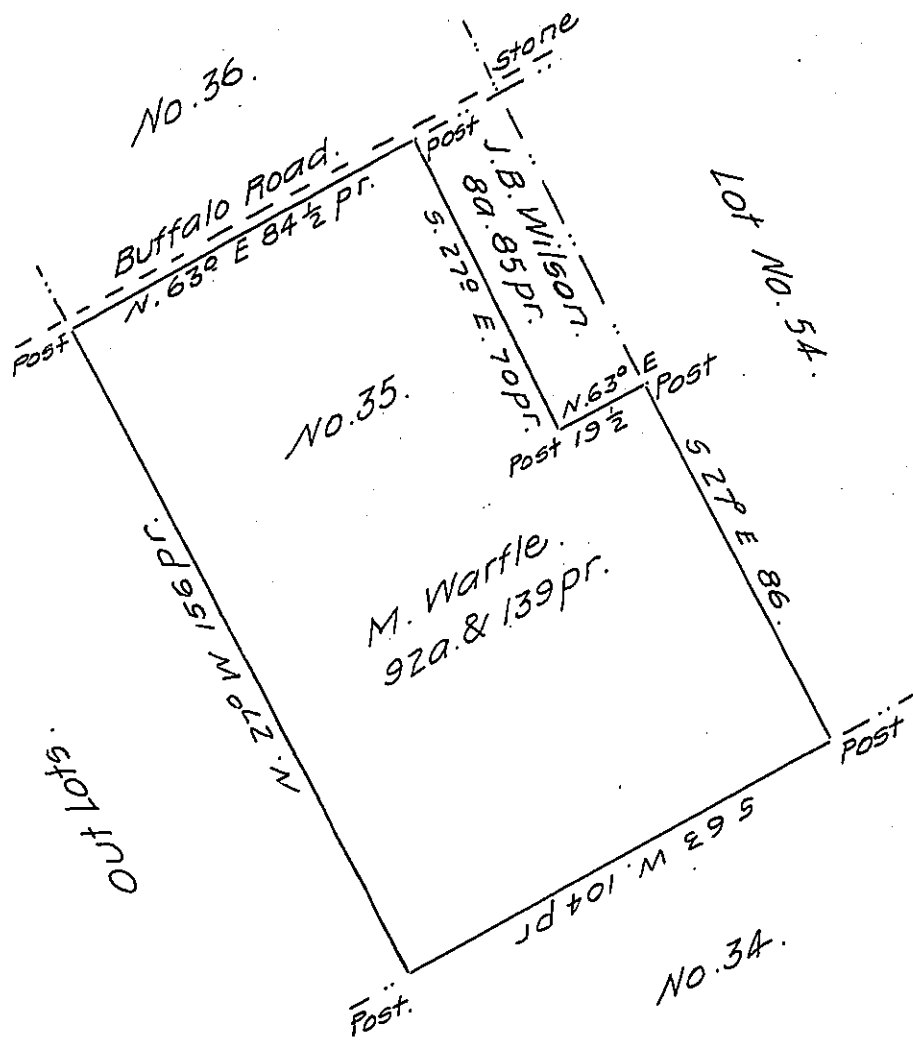


*This tract is only one hundred & fifty six perches
in length by actual measurement on the ground,
I therefore see no propriety in making it more
on paper &c.*

C. E. Webster D.S.



*A Draft of Part of a Tract of Land in the Erie Reservation
No. 35, Mill Creek Township, Erie County and State of Penna.
Surveyed May 15, A. D. 1842, for Martin Warfle, Containing nine-
ty two acres & 139 perches, Strict Measure.*

C. E. Webster, D.S.

To Jacob Salada S. G.

*I do hereby certify that from the Books & Documents in
my office the above piece of land does not appear to be other-
wise appropriated than to the sd. Martin Warfle his heirs &
assigns*

Cyrenius E. Webster D.S.

To The Secretary of the Commonwealth
of Pennsylvania

IN TESTIMONY that the above is a copy of the original remaining on file in the Department of Internal Affairs of Pennsylvania, made conformably to an Act of Assembly approved the 16th day of February, 1833, I have hereunto set my Hand and caused the Seal of said Department to be affixed at Harrisburg, this fifteenth day of April 1908

Henry Howard
Secretary of Internal Affairs.